

478500

227500


228000

228500

478500

ABBREVIATIONS (All Proposals maps):
 Amb - Ambulance Station
 BP - Business Park
 CAS - Civic Amenity Site
 Cem - Cemetery
 CF - Community Facility
 CP - Car Park
 FS - Fire Station
 GC - Golf Course
 H - Buildings/Land for Hospital Purposes
 Hot - Hotel
 HC - Health Centre
 Ind - Industry
 MU - Mixed Use
 Mus - Museum
 OS - Open Space definitions: P=Park, PF=Playing Fields,
 POS=Public Open Space, PP=Play Park, SP=Sports Pitch(es)
 PS - Primary School
 RSTW - Regional Sewage Treatment Works
 SS - Secondary School
 SW - Sewage Works
 T - Telecommunications Site
 W - Place of Worship

Note: Buildings or Land for Civic, Cultural or Other Use may include cemeteries, faith, education, community health, other social infrastructure and sports centres.



Cabinet Office
Area Plan for the North and West
Map 12 Foxdale
Post Inquiry Modifications Map

Made this xxxx day of xxxxxxxx 20xx

Adopted by Order on
 Approved by Tynwald on
 Coming into Operation on

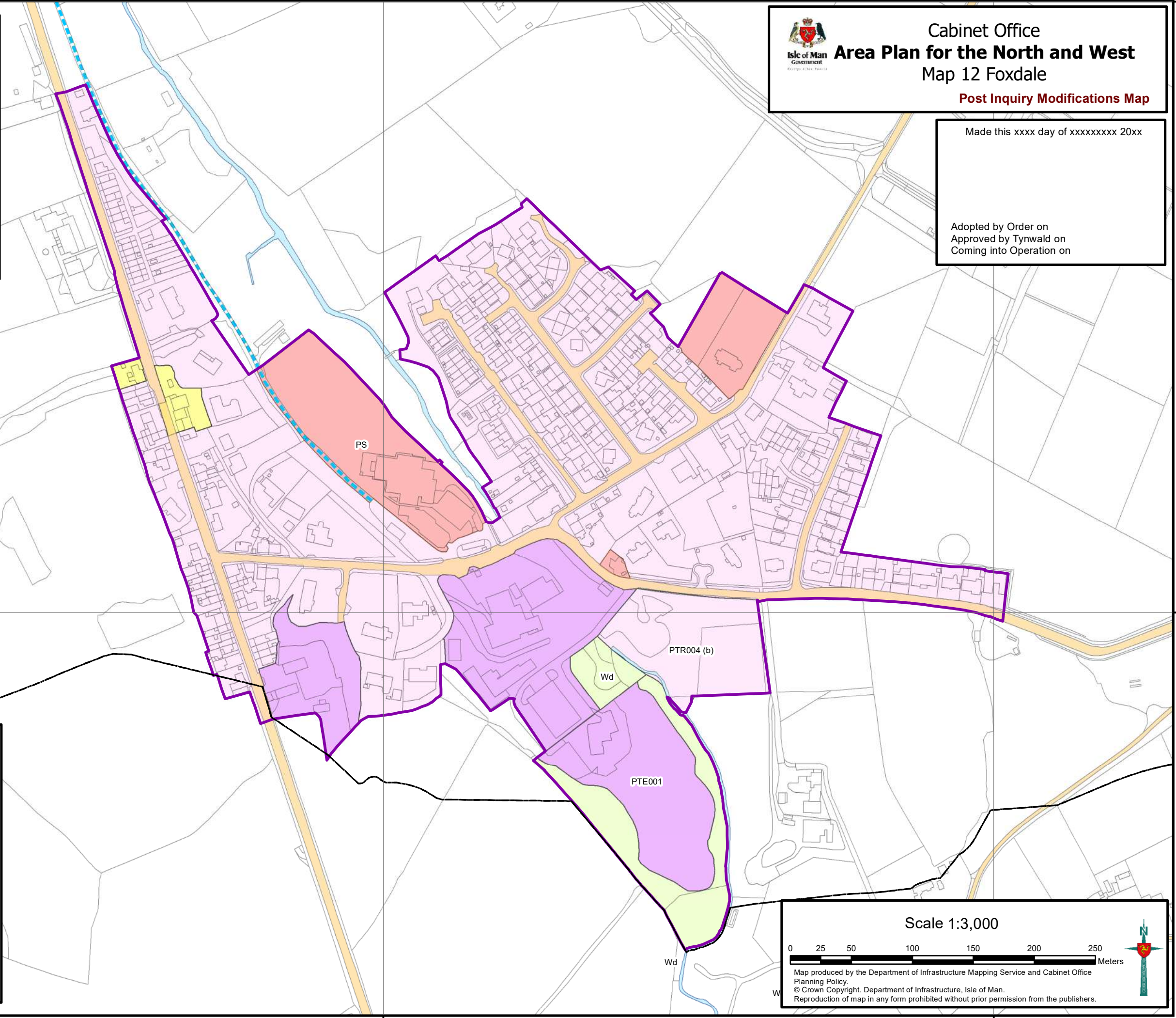
478000

478000


Legend

-  Existing Settlement Boundary
-  Local Authority boundaries
-  Active Travel Route
-  Potential Active Travel Route
-  Civic, Cultural or other use
-  Industrial
-  Mixed Use
-  Open Space (or for a Particular Purpose)
-  Railway
-  Predominantly Residential
-  Retail


Note: Not all Land Allocation classifications appear on each map.



Scale 1:3,000



Map produced by the Department of Infrastructure Mapping Service and Cabinet Office Planning Policy.
 © Crown Copyright. Department of Infrastructure, Isle of Man.
 Reproduction of map in any form prohibited without prior permission from the publishers.



227500

228000

228500