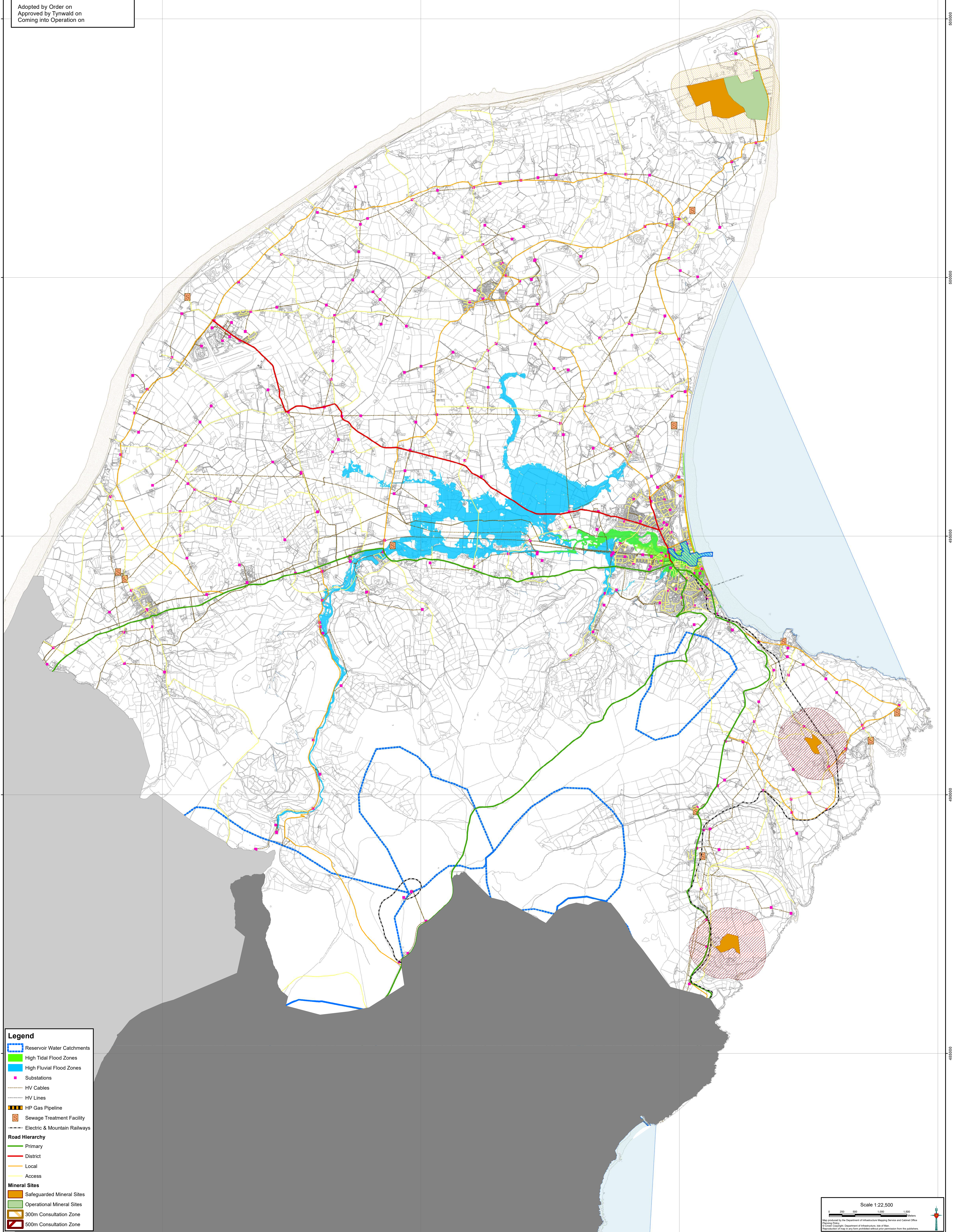


**Cabinet Office**  
**Area Plan for the North and West**  
**Map 1b Infrastructure Constraints North**  
 Post Inquiry Modifications Map

Made this xxxx day of xxxxxxxx 20xx

Adopted by Order on  
 Approved by Tynwald on  
 Coming into Operation on



- Legend**
- ▬ Reservoir Water Catchments
  - ▬ High Tidal Flood Zones
  - ▬ High Fluvial Flood Zones
  - Substations
  - ▬ HV Cables
  - ▬ HV Lines
  - ▬ HP Gas Pipeline
  - ▭ Sewage Treatment Facility
  - ▬ Electric & Mountain Railways
- Road Hierarchy**
- ▬ Primary
  - ▬ District
  - ▬ Local
  - ▬ Access
- Mineral Sites**
- ▭ Safeguarded Mineral Sites
  - ▭ Operational Mineral Sites
  - ▭ 300m Consultation Zone
  - ▭ 300m Consultation Zone