



Cabinet Office
Area Plan for the North and West
Map 6 Peel
Post Inquiry Modifications Map

Made this xxxx day of xxxxxxxx 20xx

Adopted by Order on
 Approved by Tynwald on
 Coming into Operation on

Irish Sea

Legend

- Existing Settlement Boundary
- Local Authority boundaries
- Active Travel Route
- Potential Active Travel Route
- Proposed District Link Road
- Town Centre Boundary
- Transition Zone Boundary
- Civic, Cultural or other use
- Tourism, Leisure and Recreation
- Industrial
- Mixed Use
- Open Space (or for a Particular Purpose)
- Car Park
- Railway
- Predominantly Residential
- Retail

Town Centre Divisions

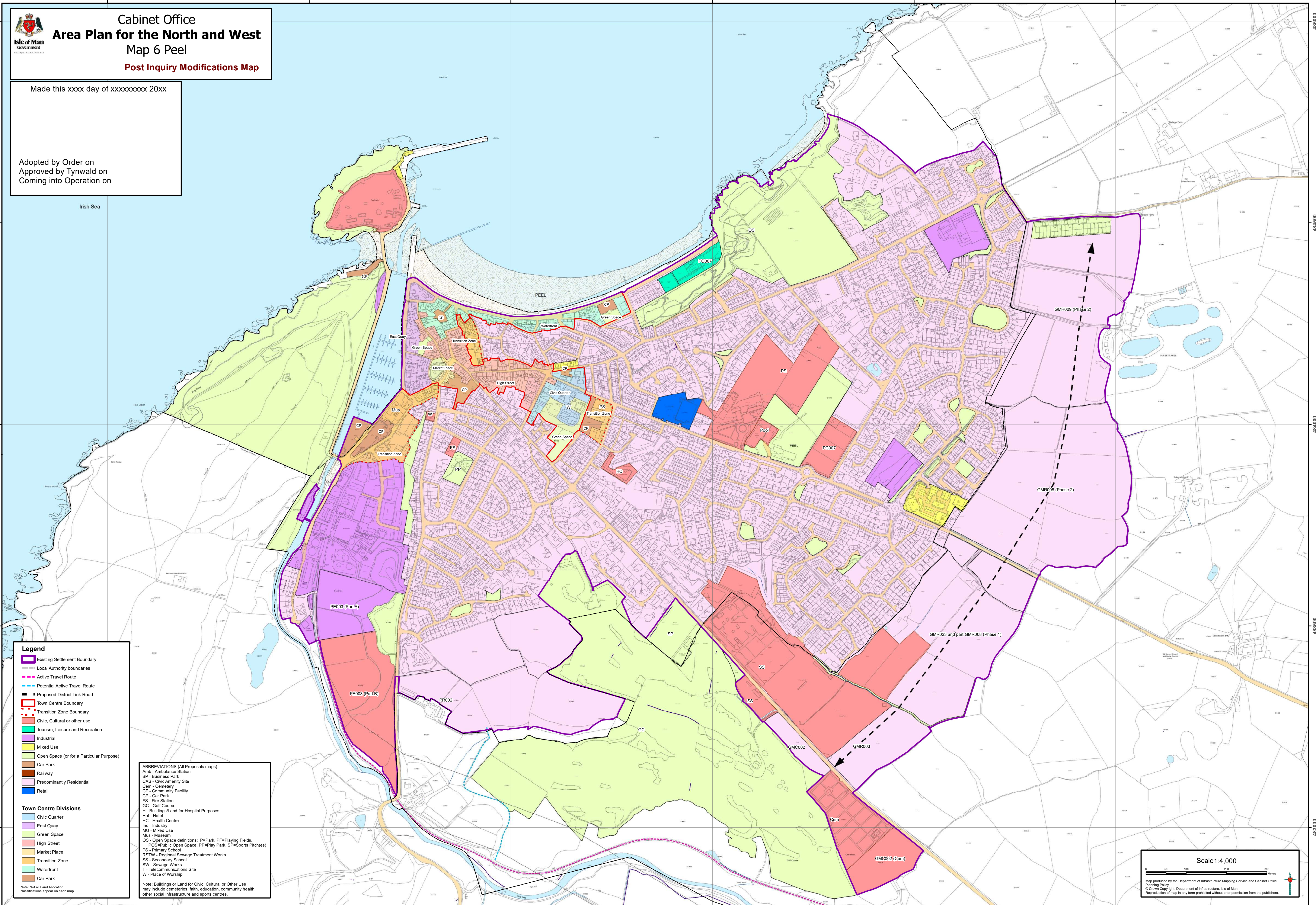
- Civic Quarter
- East Quay
- Green Space
- High Street
- Market Place
- Transition Zone
- Waterfront
- Car Park

Note: Not all Land Allocation classifications appear on each map.

ABBREVIATIONS (All Proposals maps):

- Amb - Ambulance Station
- BP - Business Park
- CAS - Civic Amenity Site
- Cem - Cemetery
- CF - Community Facility
- CP - Car Park
- FS - Fire Station
- GC - Golf Course
- H - Building/Land for Hospital Purposes
- Hot - Hotel
- HC - Health Centre
- Ind - Industry
- MU - Mixed Use
- Mus - Museum
- OS - Open Space definitions: P=Park, PF=Playing Fields, POS=Public Open Space, PP=Play Park, SP=Sports Pitch(es)
- PS - Primary School
- RSTW - Regional Sewage Treatment Works
- SS - Secondary School
- SW - Sewage Works
- T - Telecommunications Site
- W - Place of Worship

Note: Buildings or Land for Civic, Cultural or Other Use may include cemeteries, faith, education, community health, other social infrastructure and sports centres.



Scale 1:4,000

Map produced by the Department of Infrastructure Mapping Service and Cabinet Office Planning Policy.
 © Crown Copyright, Department of Infrastructure, Isle of Man.
 Reproduction of map in any form prohibited without prior permission from the publishers.