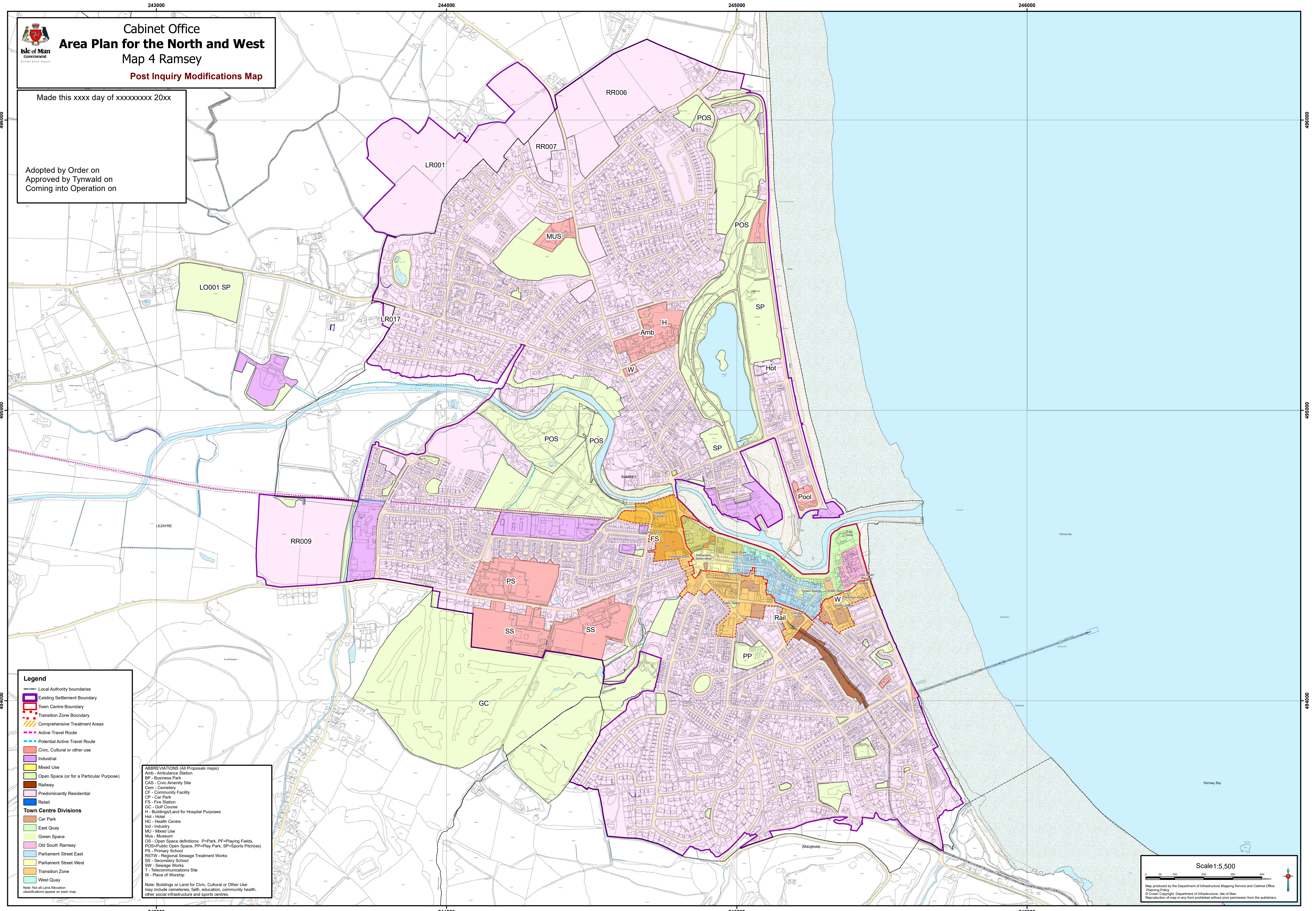




Cabinet Office  
**Area Plan for the North and West**  
 Map 4 Ramsey  
**Post Inquiry Modifications Map**

Made this xxxx day of xxxxxxxx 20xx

Adopted by Order on  
 Approved by Tynwald on  
 Coming into Operation on



**Legend**

- Local Authority boundaries
- Existing Settlement Boundary
- Town Centre Boundary
- Transition Zone Boundary
- Comprehensive Treatment Areas
- Active Travel Route
- Potential Active Travel Route
- Civic, Cultural or other use
- Industrial
- Mixed Use
- Open Space (or for a Particular Purpose)
- Railway
- Predominantly Residential
- Retail

**Town Centre Divisions**

- Car Park
- East Quay
- Green Space
- Old South Ramsey
- Parliament Street East
- Parliament Street West
- Transition Zone
- West Quay

Note: Not all Land Allocation classifications appear on each map.

**ABBREVIATIONS (All Proposals maps):**


- Amb - Ambulance Station
- BP - Business Park
- CAS - Civic Amenity Site
- Cem - Cemetery
- CF - Community Facility
- CP - Car Park
- FS - Fire Station
- GC - Golf Course
- H - Buildings/Land for Hospital Purposes
- Hot - Hotel
- HC - Health Centre
- Ind - Industry
- MU - Mixed Use
- Mus - Museum
- OS - Open Space definitions: P=Park, PF=Playing Fields, POS=Public Open Space, PP=Play Park, SP=Sports Pitch(es)
- PS - Primary School
- RSTW - Regional Sewage Treatment Works
- SS - Secondary School
- SW - Sewage Works
- T - Telecommunications Site
- W - Place of Worship

Note: Buildings or Land for Civic, Cultural or Other Use may include cemeteries, faith, education, community health, other social infrastructure and sports centres.

Scale 1:5,500

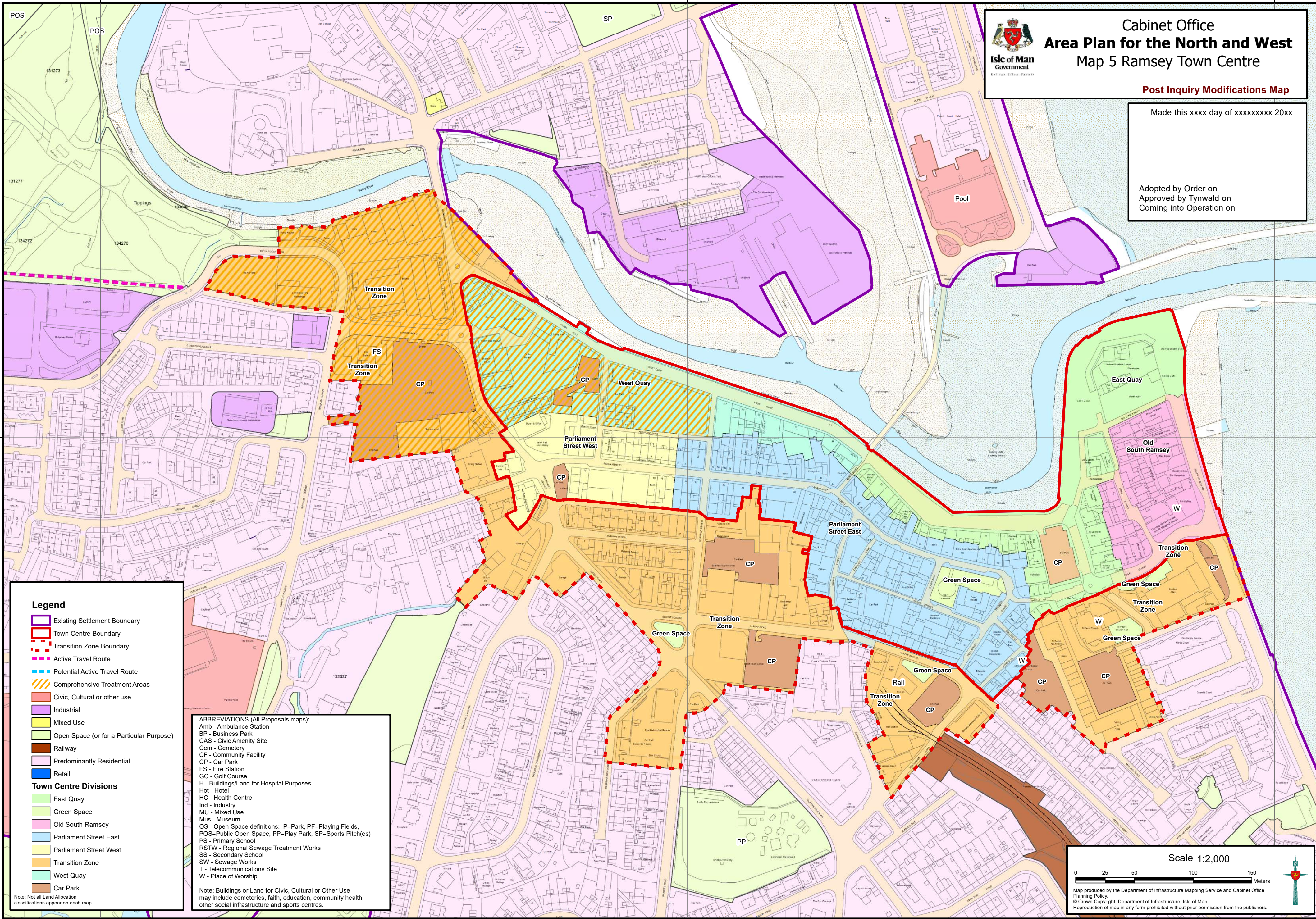
Map produced by the Department of Infrastructure Mapping Service and Cabinet Office Planning Policy.  
 © Crown Copyright, Department of Infrastructure, Isle of Man.  
 Reproduction of map in any form prohibited without prior permission from the publishers.



 Cabinet Office  
**Area Plan for the North and West**  
**Map 5 Ramsey Town Centre**  
 Post Inquiry Modifications Map

Made this xxxx day of xxxxxxxx 20xx

Adopted by Order on  
 Approved by Tynwald on  
 Coming into Operation on



494500

494500

**Legend**

- Existing Settlement Boundary
- Town Centre Boundary
- Transition Zone Boundary
- Active Travel Route
- Potential Active Travel Route
- Comprehensive Treatment Areas
- Civic, Cultural or other use
- Industrial
- Mixed Use
- Open Space (or for a Particular Purpose)
- Railway
- Predominantly Residential
- Retail

**Town Centre Divisions**

- East Quay
- Green Space
- Old South Ramsey
- Parliament Street East
- Parliament Street West
- Transition Zone
- West Quay
- Car Park

Note: Not all Land Allocation classifications appear on each map.

**ABBREVIATIONS (All Proposals maps):**

Amb - Ambulance Station  
 BP - Business Park  
 CAS - Civic Amenity Site  
 Cem - Cemetery  
 CF - Community Facility  
 CP - Car Park  
 FS - Fire Station  
 GC - Golf Course  
 H - Buildings/Land for Hospital Purposes  
 Hot - Hotel  
 HC - Health Centre  
 Ind - Industry  
 MU - Mixed Use  
 Mus - Museum  
 OS - Open Space definitions: P=Park, PF=Playing Fields,  
 POS=Public Open Space, PP=Play Park, SP=Sports Pitch(es)  
 PS - Primary School  
 RSTW - Regional Sewage Treatment Works  
 SS - Secondary School  
 SW - Sewage Works  
 T - Telecommunications Site  
 W - Place of Worship

Note: Buildings or Land for Civic, Cultural or Other Use may include cemeteries, faith, education, community health, other social infrastructure and sports centres.

Scale 1:2,000

0 25 50 100 150 Meters

Map produced by the Department of Infrastructure Mapping Service and Cabinet Office Planning Policy.  
 © Crown Copyright. Department of Infrastructure, Isle of Man.  
 Reproduction of map in any form prohibited without prior permission from the publishers.



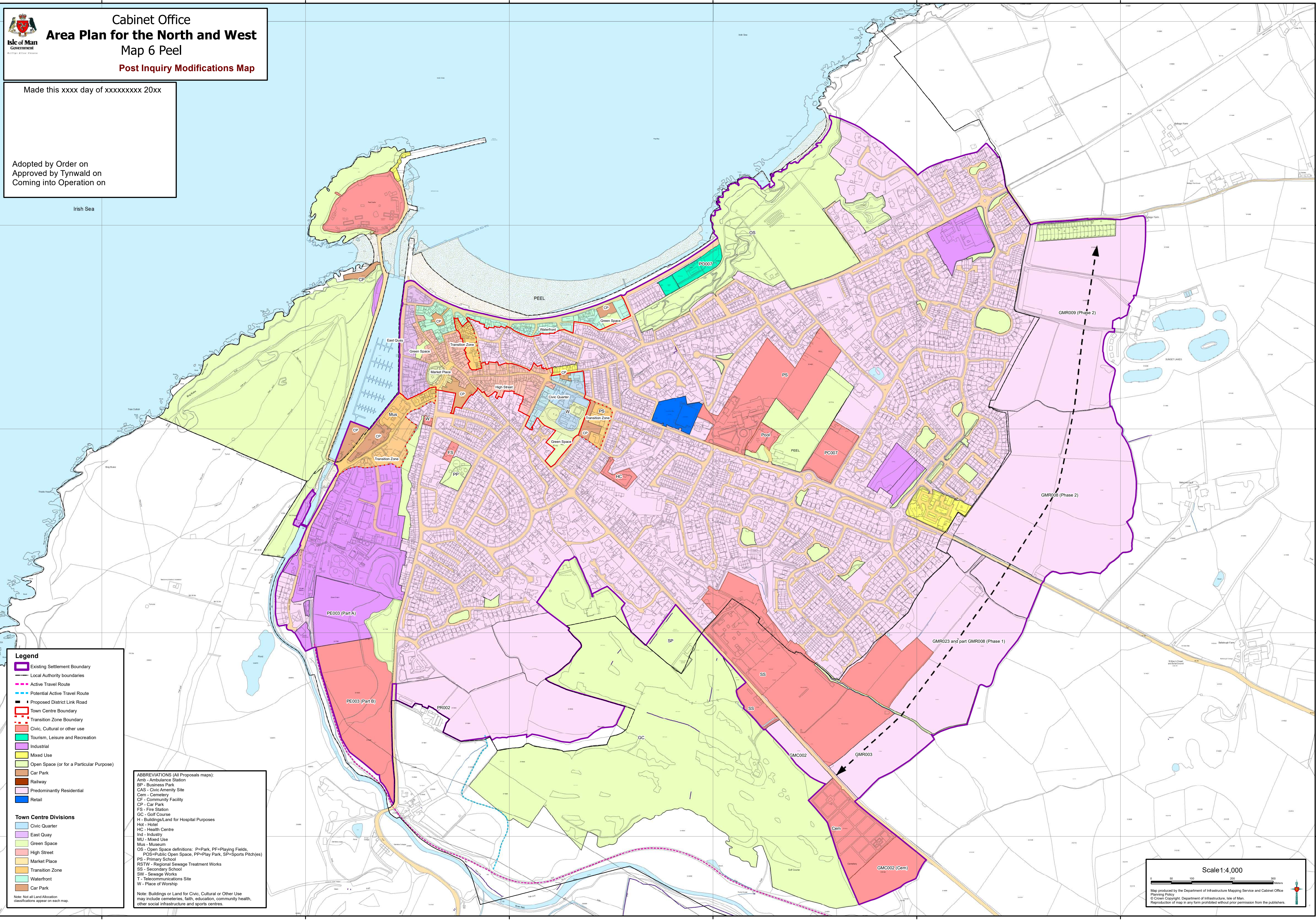


**Cabinet Office**  
**Area Plan for the North and West**  
**Map 6 Peel**  
**Post Inquiry Modifications Map**

Made this xxxx day of xxxxxxxx 20xx

Adopted by Order on  
 Approved by Tynwald on  
 Coming into Operation on

Irish Sea



**Legend**

- Existing Settlement Boundary
- Local Authority boundaries
- Active Travel Route
- Potential Active Travel Route
- Proposed District Link Road
- Town Centre Boundary
- Transition Zone Boundary
- Civic, Cultural or other use
- Tourism, Leisure and Recreation
- Industrial
- Mixed Use
- Open Space (or for a Particular Purpose)
- Car Park
- Railway
- Predominantly Residential
- Retail

**Town Centre Divisions**

- Civic Quarter
- East Quay
- Green Space
- High Street
- Market Place
- Transition Zone
- Waterfront
- Car Park

Note: Not all Land Allocation classifications appear on each map.

**ABBREVIATIONS (All Proposals maps):**

- Amb - Ambulance Station
- BP - Business Park
- CAS - Civic Amenity Site
- Cem - Cemetery
- CF - Community Facility
- CP - Car Park
- FS - Fire Station
- GC - Golf Course
- H - Building/Land for Hospital Purposes
- Hot - Hotel
- HC - Health Centre
- Ind - Industry
- MU - Mixed Use
- Mus - Museum
- OS - Open Space definitions: P=Park, PF=Playing Fields, POS=Public Open Space, PP=Play Park, SP=Sports Pitch(es)
- PS - Primary School
- RSTW - Regional Sewage Treatment Works
- SS - Secondary School
- SW - Sewage Works
- T - Telecommunications Site
- W - Place of Worship

Note: Buildings or Land for Civic, Cultural or Other Use may include cemeteries, faith, education, community health, other social infrastructure and sports centres.

**Scale 1:4,000**

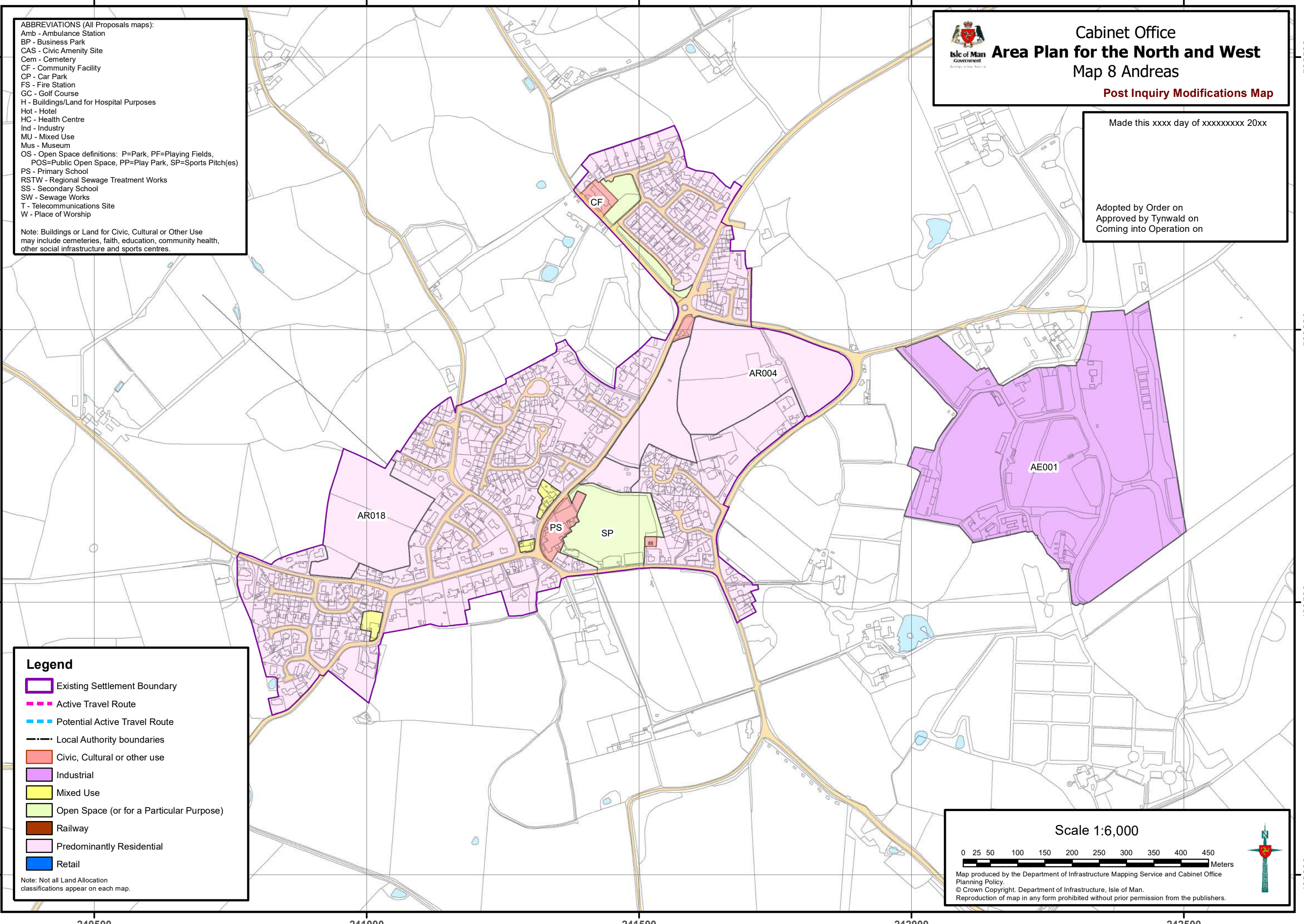
Map produced by the Department of Infrastructure Mapping Service and Cabinet Office Planning Policy.  
 © Crown Copyright, Department of Infrastructure, Isle of Man.  
 Reproduction of map in any form prohibited without prior permission from the publishers.



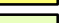

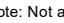


Made this xxxx day of xxxxxxxx 20xx

Adopted by Order on  
Approved by Tynwald on  
Coming into Operation on

- ABBREVIATIONS (All Proposals maps):**
- Amb - Ambulance Station
  - BP - Business Park
  - CAS - Civic Amenity Site
  - Cem - Cemetery
  - CF - Community Facility
  - CP - Car Park
  - FS - Fire Station
  - GC - Golf Course
  - H - Buildings/Land for Hospital Purposes
  - Hot - Hotel
  - HC - Health Centre
  - Ind - Industry
  - MU - Mixed Use
  - Mus - Museum
  - OS - Open Space definitions: P=Park, PF=Playing Fields,  
POS=Public Open Space, PP=Play Park, SP=Sports Pitch(es)
  - PS - Primary School
  - RSTW - Regional Sewage Treatment Works
  - SS - Secondary School
  - SW - Sewage Works
  - T - Telecommunications Site
  - W - Place of Worship
- Note: Buildings or Land for Civic, Cultural or Other Use may include cemeteries, faith, education, community health, other social infrastructure and sports centres.




- Legend**
-  Existing Settlement Boundary
  -  Active Travel Route
  -  Potential Active Travel Route
  -  Local Authority boundaries
  -  Civic, Cultural or other use
  -  Industrial
  -  Mixed Use
  -  Open Space (or for a Particular Purpose)
  -  Railway
  -  Predominantly Residential
  -  Retail
- Note: Not all Land Allocation classifications appear on each map.

**Scale 1:6,000**

0 25 50 100 150 200 250 300 350 400 450 Meters

Map produced by the Department of Infrastructure Mapping Service and Cabinet Office Planning Policy.  
© Crown Copyright. Department of Infrastructure, Isle of Man.  
Reproduction of map in any form prohibited without prior permission from the publishers.





235000 235500 236000 236500 237000

499500 499000 498500 498000

**ABBREVIATIONS (All Proposals maps):**  
 Amb - Ambulance Station  
 BP - Business Park  
 CAS - Civic Amenity Site  
 Cem - Cemetery  
 CF - Community Facility  
 CP - Car Park  
 FS - Fire Station  
 GC - Golf Course  
 H - Buildings/Land for Hospital Purposes  
 Hot - Hotel  
 HC - Health Centre  
 Ind - Industry  
 MU - Mixed Use  
 Mus - Museum  
 OS - Open Space definitions: P=Park, PF=Playing Fields,  
 POS=Public Open Space, PP=Play Park, SP=Sports Pitch(es)  
 P - Prison  
 PS - Primary School  
 RSTW - Regional Sewage Treatment Works  
 SR - Service Reservoir  
 SS - Secondary School  
 SW - Sewage Works  
 T - Telecommunications Site  
 W - Place of Worship

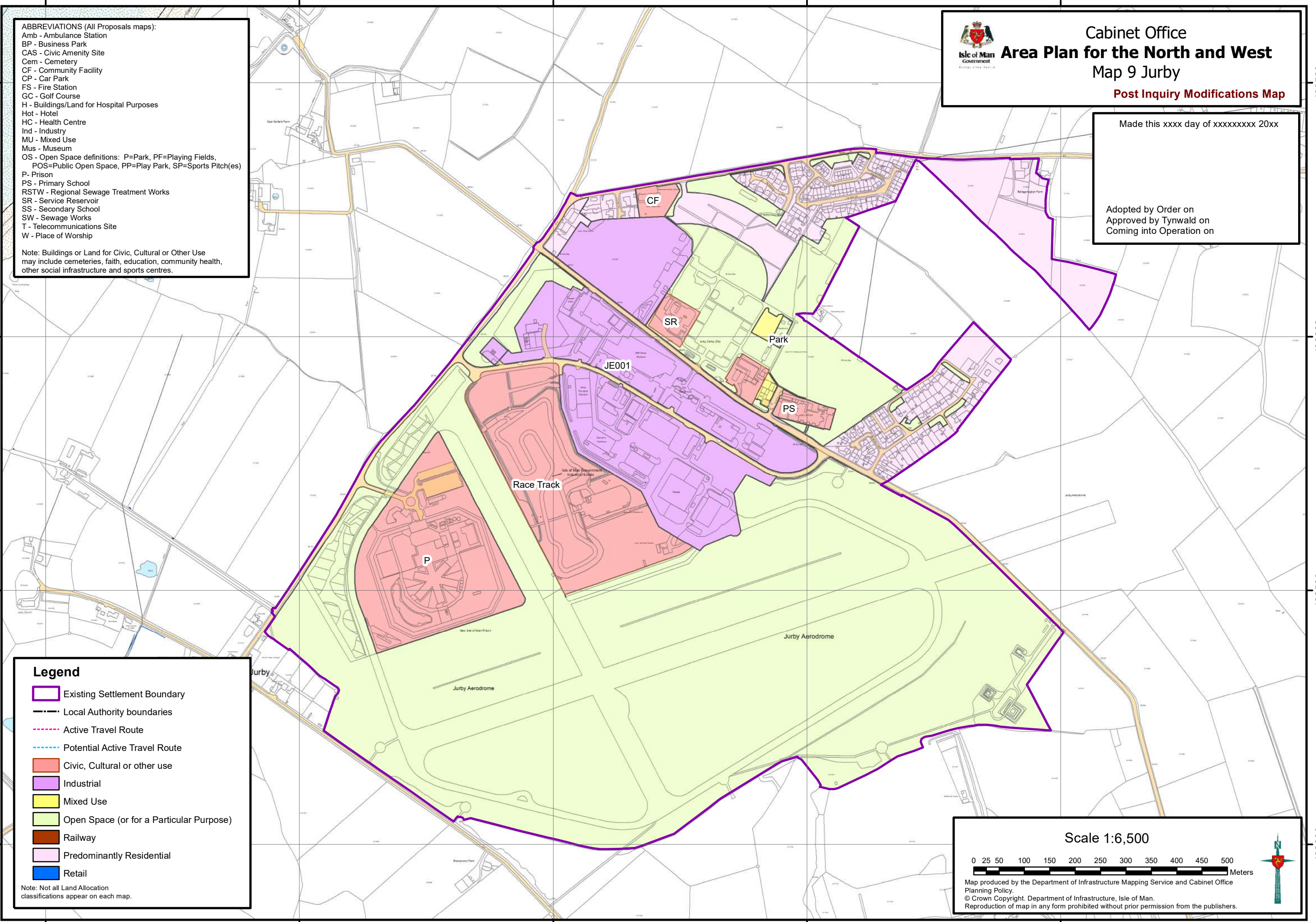
Note: Buildings or Land for Civic, Cultural or Other Use may include cemeteries, faith, education, community health, other social infrastructure and sports centres.




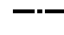








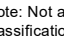
**Cabinet Office**  
**Area Plan for the North and West**  
**Map 9 Jurby**  
**Post Inquiry Modifications Map**

Made this xxxx day of xxxxxxxx 20xx

Adopted by Order on  
 Approved by Tynwald on  
 Coming into Operation on

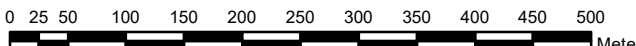


**Legend**


-  Existing Settlement Boundary
-  Local Authority boundaries
-  Active Travel Route
-  Potential Active Travel Route
-  Civic, Cultural or other use
-  Industrial
-  Mixed Use
-  Open Space (or for a Particular Purpose)
-  Railway
-  Predominantly Residential
-  Retail

Note: Not all Land Allocation classifications appear on each map.

**Scale 1:6,500**



0 25 50 100 150 200 250 300 350 400 450 500 Meters



Map produced by the Department of Infrastructure Mapping Service and Cabinet Office Planning Policy.  
 © Crown Copyright. Department of Infrastructure, Isle of Man.  
 Reproduction of map in any form prohibited without prior permission from the publishers.

235000 235500 236000 236500 237000



231000

231500

232000



# Cabinet Office Area Plan for the North and West Map 10 Kirk Michael

Post Inquiry Modifications Map

Made this xxxx day of xxxxxxxx 20xx

Adopted by Order on  
Approved by Tynwald on  
Coming into Operation on

491500

491500

491000

491000

490500

490500

490000

490000

### Legend

- Existing Settlement Boundary
- Local Authority boundaries
- Active Travel Route
- Potential Active Travel Route
- Potential Local Access Road
- Car Park
- Civic, Cultural or other use
- Industrial
- Mixed Use
- Open Space (or for a Particular Purpose)
- Railway
- Predominantly Residential
- Retail

Note: Not all Land Allocation classifications appear on each map.

### ABBREVIATIONS (All Proposals maps):

- Amb - Ambulance Station
- BP - Business Park
- CAS - Civic Amenity Site
- Cem - Cemetery
- CF - Community Facility
- CP - Car Park
- FS - Fire Station
- GC - Golf Course
- H - Buildings/Land for Hospital Purposes
- Hot - Hotel
- HC - Health Centre
- Ind - Industry
- MU - Mixed Use
- Mus - Museum
- OS - Open Space definitions: P=Park, PF=Playing Fields, POS=Public Open Space, PP=Play Park, SP=Sports Pitch(es)
- PS - Primary School
- RSTW - Regional Sewage Treatment Works
- SS - Secondary School
- SW - Sewage Works
- T - Telecommunications Site
- W - Place of Worship

Note: Buildings or Land for Civic, Cultural or Other Use may include cemeteries, faith, education, community health, other social infrastructure and sports centres.

Scale 1:3,500

0 25 50 100 150 200 250 Meters  
Map produced by the Department of Infrastructure Mapping Service and Cabinet Office Planning Policy.  
© Crown Copyright. Department of Infrastructure, Isle of Man.  
Reproduction of map in any form prohibited without prior permission from the publishers.

231000

231500

232000



227500

228000

228500

229000

482500

482500

- ABBREVIATIONS (All Proposals maps):**
- Amb - Ambulance Station
  - BP - Business Park
  - CAS - Civic Amenity Site
  - Cem - Cemetery
  - CF - Community Facility
  - CP - Car Park
  - FS - Fire Station
  - GC - Golf Course
  - H - Buildings/Land for Hospital Purposes
  - Hot - Hotel
  - HC - Health Centre
  - Ind - Industry
  - MU - Mixed Use
  - Mus - Museum
  - OS - Open Space definitions: P=Park, PF=Playing Fields, POS=Public Open Space, PP=Play Park, SP=Sports Pitch(es)
  - PS - Primary School
  - RSTW - Regional Sewage Treatment Works
  - SS - Secondary School
  - SW - Sewage Works
  - T - Telecommunications Site
  - W - Place of Worship
- Note:** Buildings or Land for Civic, Cultural or Other Use may include cemeteries, faith, education, community health, other social infrastructure and sports centres.



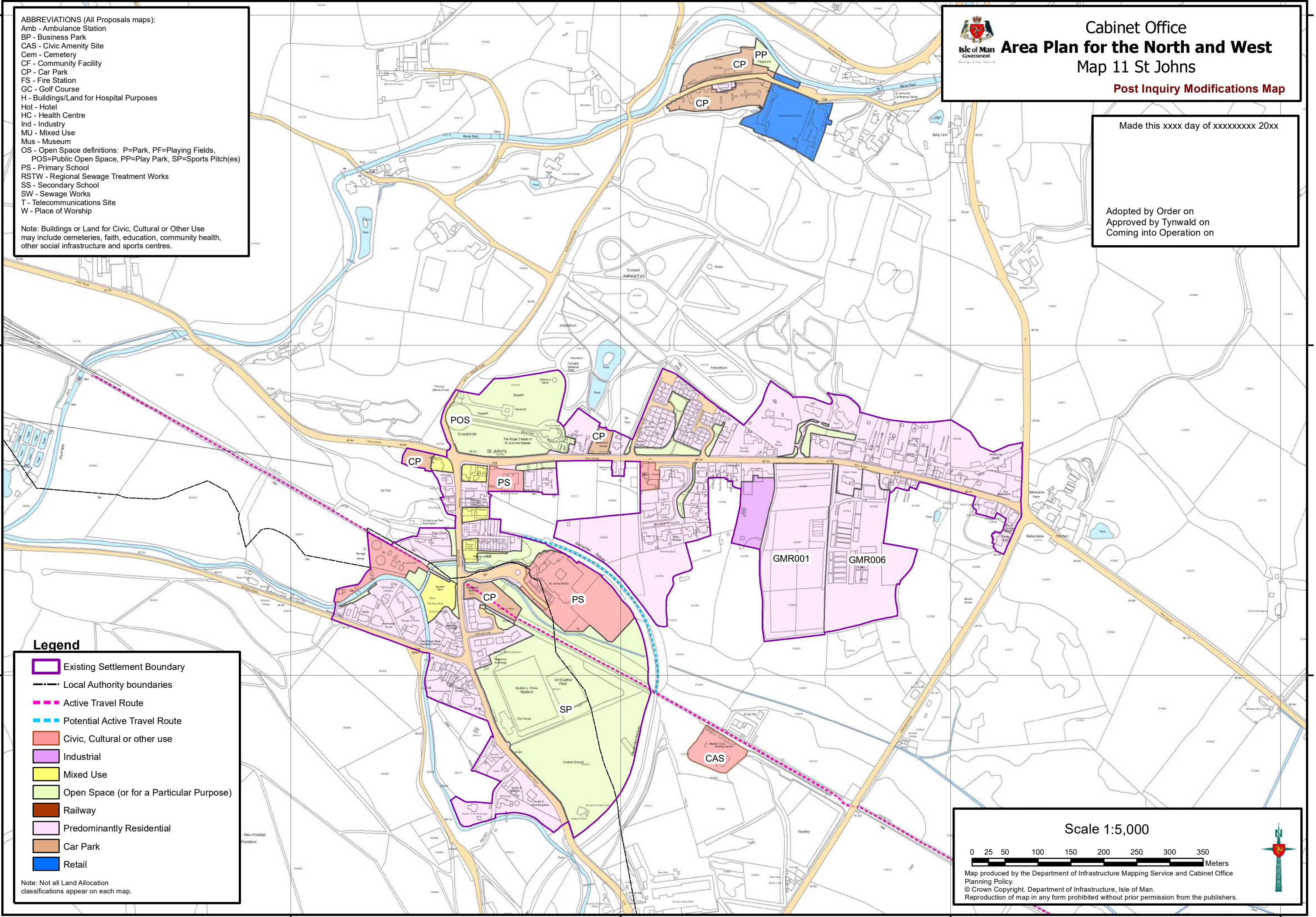
**Cabinet Office**  
**Area Plan for the North and West**  
**Map 11 St Johns**  
**Post Inquiry Modifications Map**

Made this xxxx day of xxxxxxxx 20xx

Adopted by Order on  
 Approved by Tynwald on  
 Coming into Operation on

482000

482000



**Legend**

- Existing Settlement Boundary
- Local Authority boundaries
- Active Travel Route
- Potential Active Travel Route
- Civic, Cultural or other use
- Industrial
- Mixed Use
- Open Space (or for a Particular Purpose)
- Railway
- Predominantly Residential
- Car Park
- Retail

**Note:** Not all Land Allocation classifications appear on each map.

**Scale 1:5,000**

0 25 50 100 150 200 250 300 350 Meters

Map produced by the Department of Infrastructure Mapping Service and Cabinet Office Planning Policy.  
 © Crown Copyright. Department of Infrastructure, Isle of Man.  
 Reproduction of map in any form prohibited without prior permission from the publishers.

227500

228000

228500

229000

481500

481500



245000

**ABBREVIATIONS (All Proposals maps):**  
 Amb - Ambulance Station  
 BP - Business Park  
 CAS - Civic Amenity Site  
 Cem - Cemetery  
 CF - Community Facility  
 CP - Car Park  
 FS - Fire Station  
 GC - Golf Course  
 H - Buildings/Land for Hospital Purposes  
 Hot - Hotel  
 HC - Health Centre  
 Ind - Industry  
 MU - Mixed Use  
 Mus - Museum  
 OS - Open Space definitions: P=Park, PF=Playing Fields,  
 POS=Public Open Space, PP=Play Park, SP=Sports Pitch(es)  
 PS - Primary School  
 RSTW - Regional Sewage Treatment Works  
 SS - Secondary School  
 SW - Sewage Works  
 T - Telecommunications Site  
 W - Place of Worship

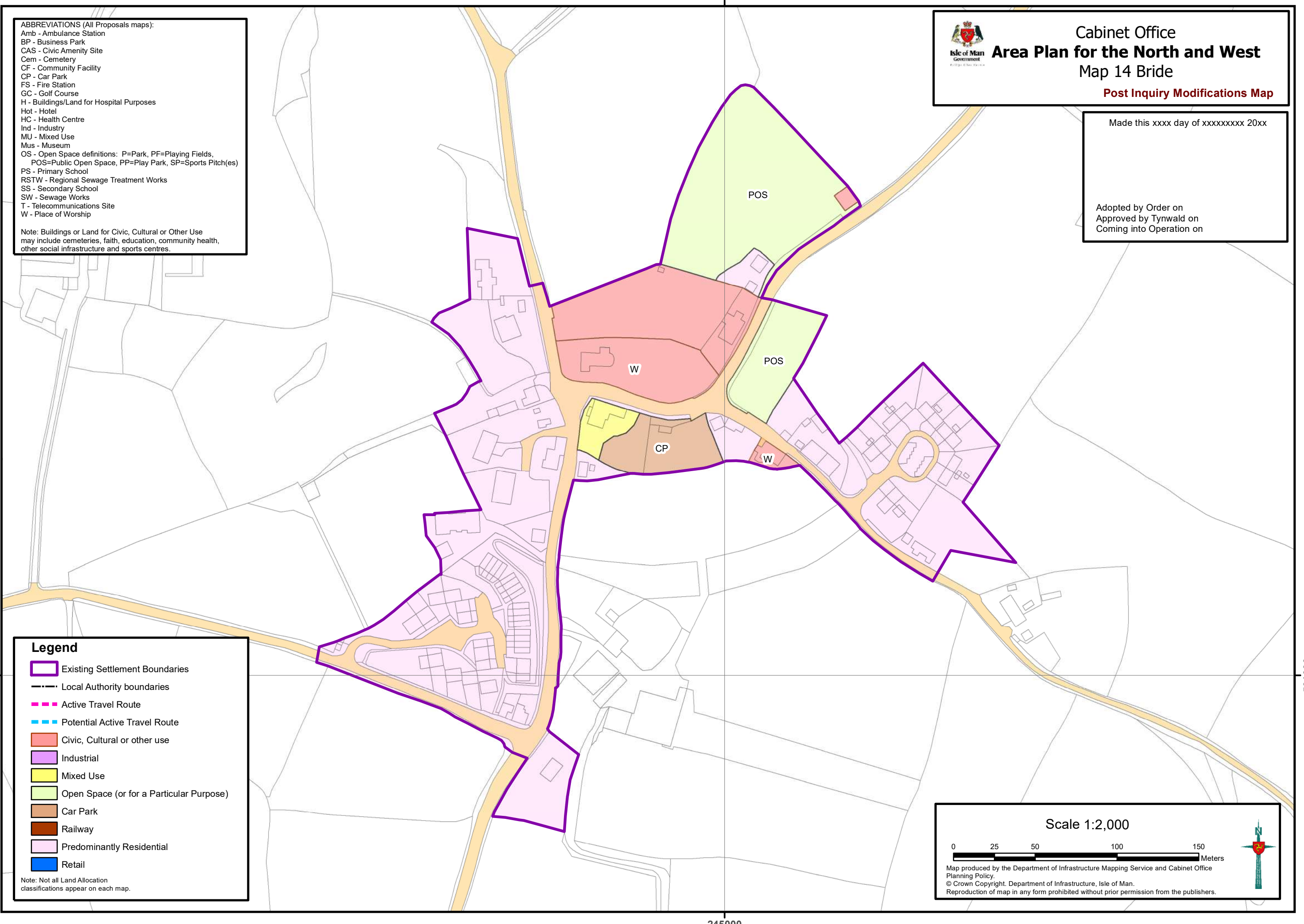
Note: Buildings or Land for Civic, Cultural or Other Use may include cemeteries, faith, education, community health, other social infrastructure and sports centres.



**Cabinet Office**  
**Area Plan for the North and West**  
**Map 14 Bride**  
**Post Inquiry Modifications Map**

Made this xxxx day of xxxxxxxx 20xx

Adopted by Order on  
 Approved by Tynwald on  
 Coming into Operation on




**Legend**


-  Existing Settlement Boundaries
-  Local Authority boundaries
-  Active Travel Route
-  Potential Active Travel Route
-  Civic, Cultural or other use
-  Industrial
-  Mixed Use
-  Open Space (or for a Particular Purpose)
-  Car Park
-  Railway
-  Predominantly Residential
-  Retail

Note: Not all Land Allocation classifications appear on each map.

**Scale 1:2,000**



Map produced by the Department of Infrastructure Mapping Service and Cabinet Office Planning Policy.  
 © Crown Copyright. Department of Infrastructure, Isle of Man.  
 Reproduction of map in any form prohibited without prior permission from the publishers.



245000

501000

501000



- ABBREVIATIONS (All Proposals maps):**
- Amb - Ambulance Station
  - BP - Business Park
  - CAS - Civic Amenity Site
  - Cem - Cemetery
  - CF - Community Facility
  - CP - Car Park
  - FS - Fire Station
  - GC - Golf Course
  - H - Buildings/Land for Hospital Purposes
  - Hot - Hotel
  - HC - Health Centre
  - Ind - Industry
  - MU - Mixed Use
  - Mus - Museum
  - OS - Open Space definitions: P=Park, PF=Playing Fields, POS=Public Open Space, PP=Play Park, SP=Sports Pitch(es)
  - PS - Primary School
  - RSTW - Regional Sewage Treatment Works
  - SS - Secondary School
  - SW - Sewage Works
  - T - Telecommunications Site
  - W - Place of Worship

Note: Buildings or Land for Civic, Cultural or Other Use may include cemeteries, faith, education, community health, other social infrastructure and sports centres.

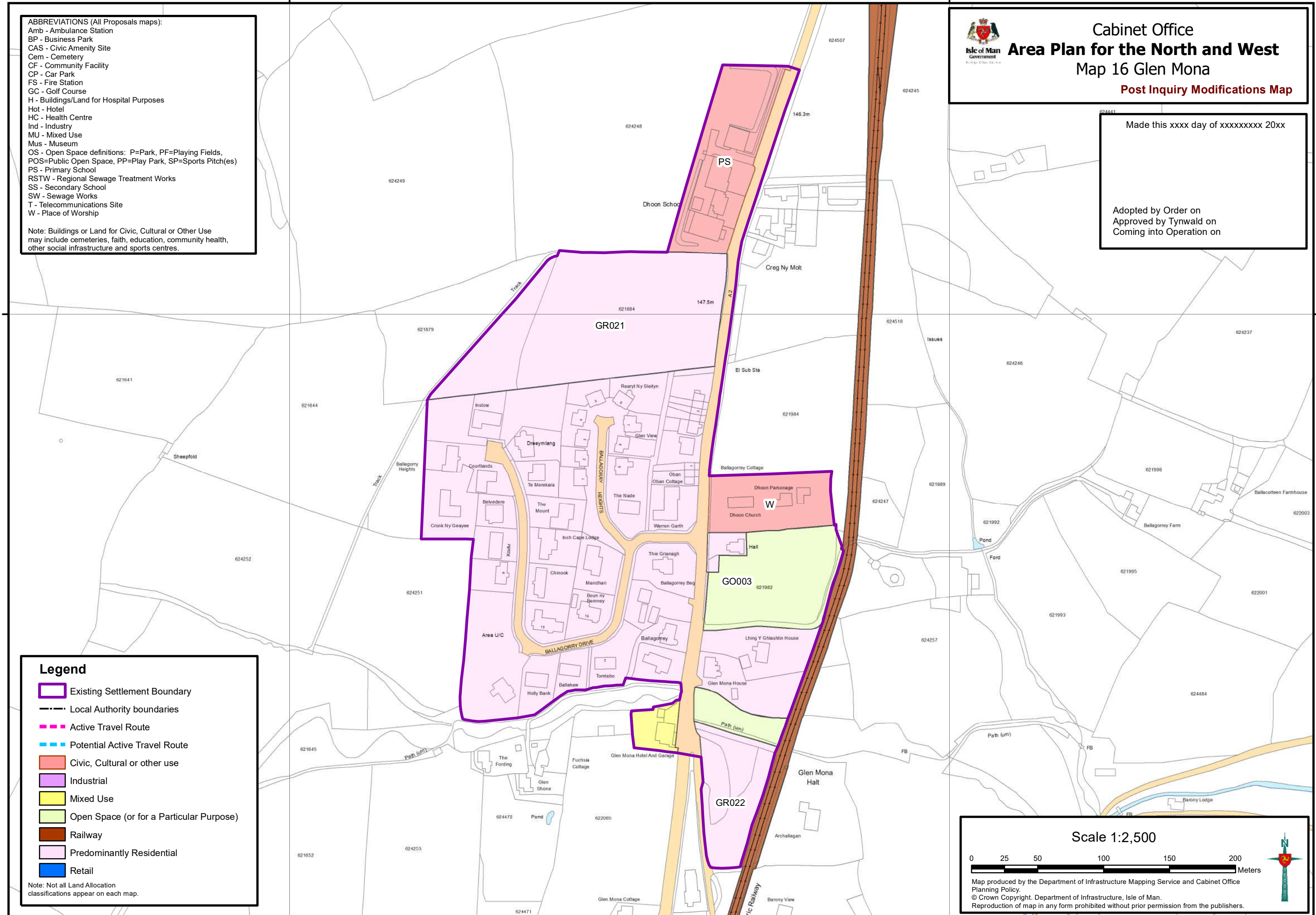


**Cabinet Office**  
**Area Plan for the North and West**  
**Map 16 Glen Mona**

**Post Inquiry Modifications Map**

Made this xxxx day of xxxxxxxx 20xx

Adopted by Order on  
 Approved by Tynwald on  
 Coming into Operation on

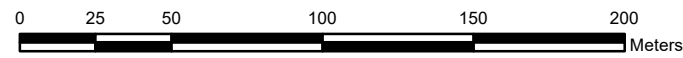


**Legend**

- Existing Settlement Boundary
- Local Authority boundaries
- Active Travel Route
- Potential Active Travel Route
- Civic, Cultural or other use
- Industrial
- Mixed Use
- Open Space (or for a Particular Purpose)
- Railway
- Predominantly Residential
- Retail

Note: Not all Land Allocation classifications appear on each map.

Scale 1:2,500



Map produced by the Department of Infrastructure Mapping Service and Cabinet Office Planning Policy.  
 © Crown Copyright. Department of Infrastructure, Isle of Man.  
 Reproduction of map in any form prohibited without prior permission from the publishers.









**ABBREVIATIONS (All Proposals maps):**  
 Amb - Ambulance Station  
 BP - Business Park  
 CAS - Civic Amenity Site  
 Cem - Cemetery  
 CF - Community Facility  
 CP - Car Park  
 FS - Fire Station  
 GC - Golf Course  
 H - Buildings/Land for Hospital Purposes  
 Hot - Hotel  
 HC - Health Centre  
 Ind - Industry  
 MU - Mixed Use  
 Mus - Museum  
 OS - Open Space definitions: P=Park, PF=Playing Fields,  
 POS=Public Open Space, PP=Play Park, SP=Sports Pitch(es)  
 PS - Primary School  
 RSTW - Regional Sewage Treatment Works  
 SS - Secondary School  
 SW - Sewage Works  
 T - Telecommunications Site  
 W - Place of Worship

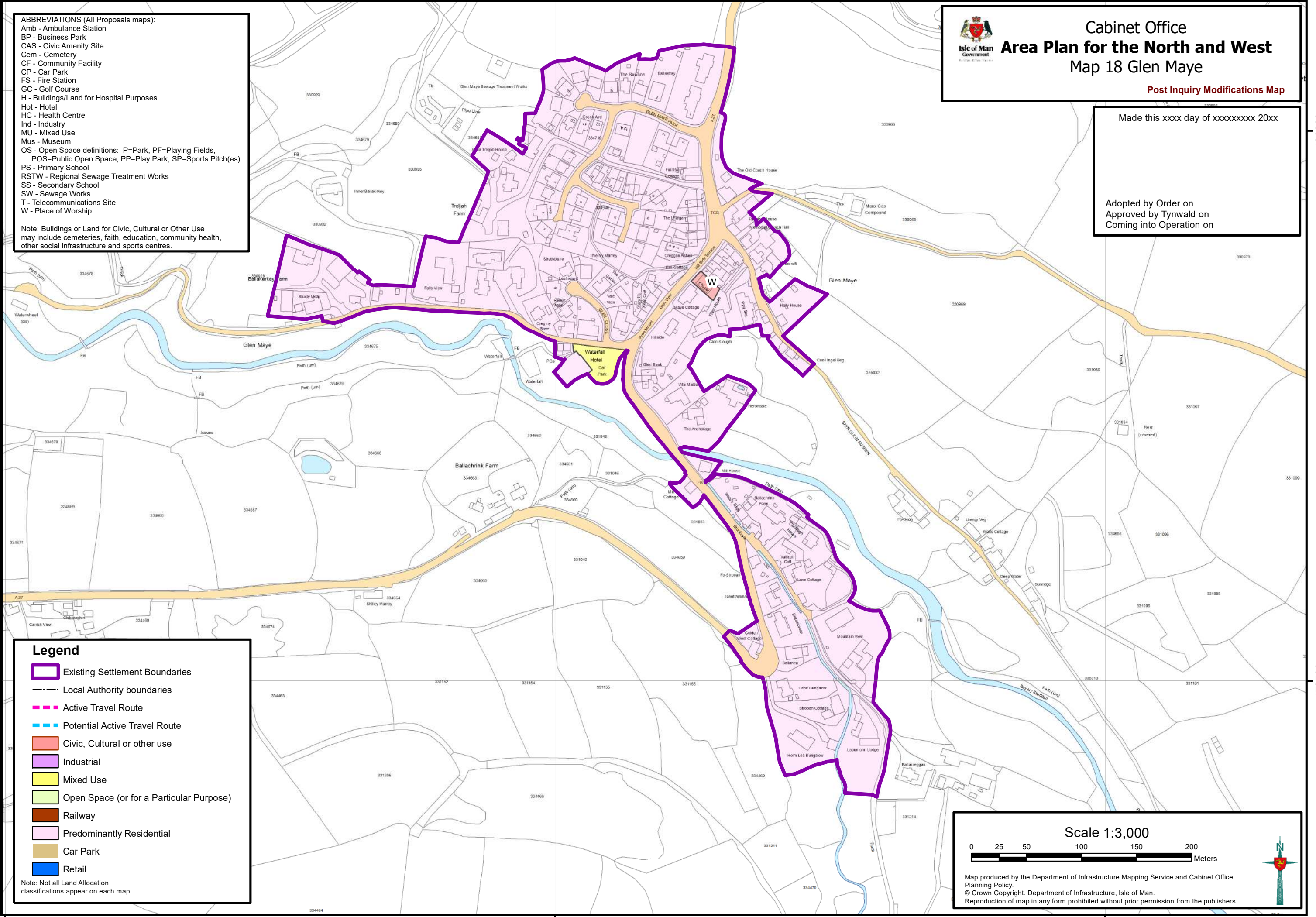
Note: Buildings or Land for Civic, Cultural or Other Use may include cemeteries, faith, education, community health, other social infrastructure and sports centres.



**Cabinet Office**  
**Area Plan for the North and West**  
**Map 18 Glen Maye**  
 Post Inquiry Modifications Map

Made this xxxx day of xxxxxxxx 20xx

Adopted by Order on  
 Approved by Tynwald on  
 Coming into Operation on

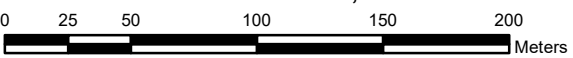


**Legend**


-  Existing Settlement Boundaries
-  Local Authority boundaries
-  Active Travel Route
-  Potential Active Travel Route
-  Civic, Cultural or other use
-  Industrial
-  Mixed Use
-  Open Space (or for a Particular Purpose)
-  Railway
-  Predominantly Residential
-  Car Park
-  Retail

Note: Not all Land Allocation classifications appear on each map.

**Scale 1:3,000**



0 25 50 100 150 200 Meters



Map produced by the Department of Infrastructure Mapping Service and Cabinet Office Planning Policy.  
 © Crown Copyright. Department of Infrastructure, Isle of Man.  
 Reproduction of map in any form prohibited without prior permission from the publishers.